

L'AZULI

A woman with long, dark hair is seen from behind, looking out over a swimming pool. The pool is surrounded by lush greenery and a building with a tiled roof. The scene is bathed in warm, golden light, suggesting a tropical or resort setting. The overall mood is serene and relaxing.

# LAZULI

YOUR *Escape*  
DESTINATION

# STORY BEHIND

LAZULI has a bounty of vibrant positive energies. It represents compassion, respect and trust. The intense blue of the stone stands for honor, humanity and discretion whereas the purplish tones symbolize grace and sensitivity.

LAZULI is one of the oldest opaque gemstones in history - more than 6,500 years - ! This deep blue stone includes tiny flecks of mica, like a night sky full of stars.

LAZULI comes from the Persian word lazhuward, meaning "blue".

A high-angle photograph of a beach scene. In the foreground, a wooden lounge chair with a blue and white striped cushion is partially visible. The chair is on a light-colored, sandy or paved surface. In the background, the ocean waves are breaking onto the shore, creating white foam. The water is a deep blue. The overall scene is bright and sunny, with shadows cast across the ground. The text "DESIGNED IN INNOVATIVE STYLE" is overlaid in the center of the image in a white, bold, sans-serif font.

**DESIGNED IN INNOVATIVE STYLE**

# ABOUT LAZULI

A private residential community spread over about 40,000 sqm of land; LAZULI exemplifies affordable luxury and the joy of easy living amidst dramatic scenery and lush green landscapes with all-year-round warm weather.

This serene community offers a quiet refuge from the hustle and bustle of the city.

Escape the routine of everyday life at the perfect destination, right here in Egypt.

# RED SEA RIVIERA

An aerial photograph of a coastline. The top left shows a sandy beach with distinct patterns. A line of white, foamy waves is crashing onto the shore, creating a stark contrast with the dark blue water. The water extends to the right and bottom, showing varying shades of blue and green, indicating depth and possibly underwater reefs or sandbars.

The Red Sea Riviera, Egypt's eastern coastline along the Red Sea, consists of resort cities on the western shore of the Gulf of Aqaba and along the east coast of mainland Egypt, south of the Gulf of Suez. The combination of a favorable climate, warm sea, thousands of kilometers of shoreline and abundant natural and archaeological points of interest makes this stretch of Egypt's coastline a popular national and international tourist destination. There are numerous National Parks along the Red Sea Riviera, both underwater and on land. Several laws protect desert and marine life, and visitors may be subject to heavy fines for not abiding.

# RED SEA IS A SMALL PARADISE WITH A GREAT PASSION

The Red Sea is 2,350 km long and 350 km wide and reaches a depth of 3,000 meters in the central area and 600 to 800 meters near the reef. In correspondence with the Gulf of Suez and the Bab el Mandeb Strait, the depth varies from 60 to 100 meters.



**RED SEA**

# HURGHADA HOLDS ALL THE HEART AND SOUL'S DESIRES

Spanning over 40 km of pristine coastline, Hurghada City has year-round sunshine, incredibly beautiful coral reefs and dozens of exciting attractions in a laid back, relaxed atmosphere. Even though it's known as a top-three diving destination on the planet, it still has something for everyone, even the non-divers: beach fun, extreme water sports, clubbing and golfing are only some of the options you have to choose from. You can also enjoy an amazingly relaxing holiday by booking a treatment or two at one of Hurghada's best Spas. Hurghada is a luxury resort town divided by Sigala, El-Dahar and El-Memsha.

# HURGHADA

# LOCATION

AIRPORT

HURGHADA  
GRAND AQUARIUM

TOURIST  
WALK

TITANIC  
RESORT

SAND  
CITY

SENZO MALL

JUNGLE  
AQUA PARK

LAZULI

SAHL  
HASHEESH  
GATE 2

SAHL  
HASHEESH

DANA BEACH

DESERT ROSE  
RESORT

PARADISE  
GOLDEN

RED SEA

LAZULI IS LOCATED  
ON THE WAY TO  
SAHL HASHEESH

- 8 MINUTES FROM SAHL HASHEESH
- 12 MINUTES FROM HURGHADA
- 20 MINUTES FROM MAKADI BAY
- 4 MINUTES FROM SENZO MALL & CLUB
- 15 MINUTES FROM HURGHADA AIRPORT

# THINGS TO DO IN HURGHADA

## DIVING AND SNORKELING:

Red Sea diving is world-renowned, if you want to experience the Red Sea's gorgeous reefs and marine life without actually diving, boat trips to great snorkeling spots are easily arranged too, either by the dive centers

## SPEND THE DAY ON FULLY-SERVICED BEACHES:

The Hurghada area has some of Egypt's best white sand beaches, with crystal clear calm water. Almost all of the resorts have their own beaches with umbrellas, sunbeds, towels and full service to bring you drinks, food.

## BOAT TRIPS TO THE ISLANDS:

There are several different islands peppering the coast of Hurghada, and depending on the island you can either snorkel and explore, or spend the whole day at a beach bar/restaurant that offers sunbeds and umbrellas.

## WATER SPORTS/ACTIVITIES:

Aside from diving, snorkeling, swimming and sunbathing, there are a ton of other things you can do in the water: Kitesurfing - Windsurfing - Water-skiing - Catamaran - Parasailing - Sailing - Fishing - Glass bottom boat

## DESERT ACTIVITIES:

If you've had your fill of beach and water-related stuff, fear not, there's still lots more to do in Egypt's Eastern Desert and mountains border in Hurghada.

## HURGHADA GRAND AQUARIUM:

It is a display of red sea marine life, zoo and museum. inspires every ages but perfect for children to get educated about the marine environment of the red sea and ecology, it is a good trip also for not good swimmers



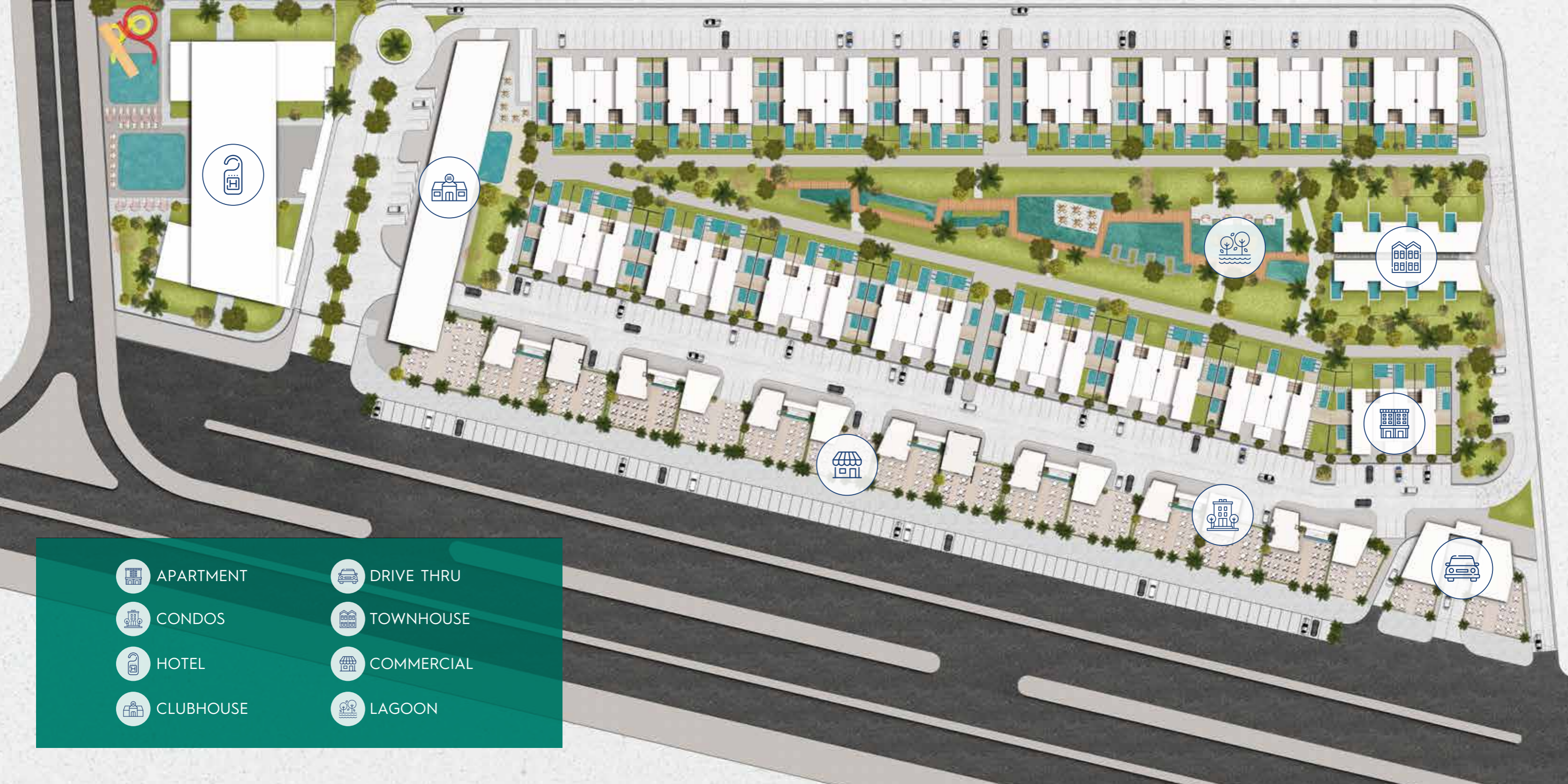


# DESIGN CONCEPT

**Design:** in an innovative style, providing the charm of a private relaxing lifestyle. Combining breathtaking landscapes and mesmerizing views offer complete privacy and safety for residents without being isolated from the world.

**Landscape:** Our broad experience across a range of sectors and development scales ensures that we are able to provide a comprehensive and high-quality service and are well positioned to assist our clients in the delivery of viable, attractive and high-quality landscape schemes which result in effective place making.





 APARTMENT

 DRIVE THRU

 CONDOS

 TOWNHOUSE

 HOTEL

 COMMERCIAL

 CLUBHOUSE

 LAGOON

A tropical scene featuring palm trees and a swimming pool. The palm fronds are dark green and frame the top and bottom of the image. The swimming pool water is a vibrant turquoise color with visible ripples and reflections. The overall atmosphere is bright and refreshing.

**AN INSPIRATION OF LIFE**

# FACILITIES



GYM



PRIVATE POOL



LAGOON



VIP LOUNGE



BOARDWALK



PADDLE TENNIS



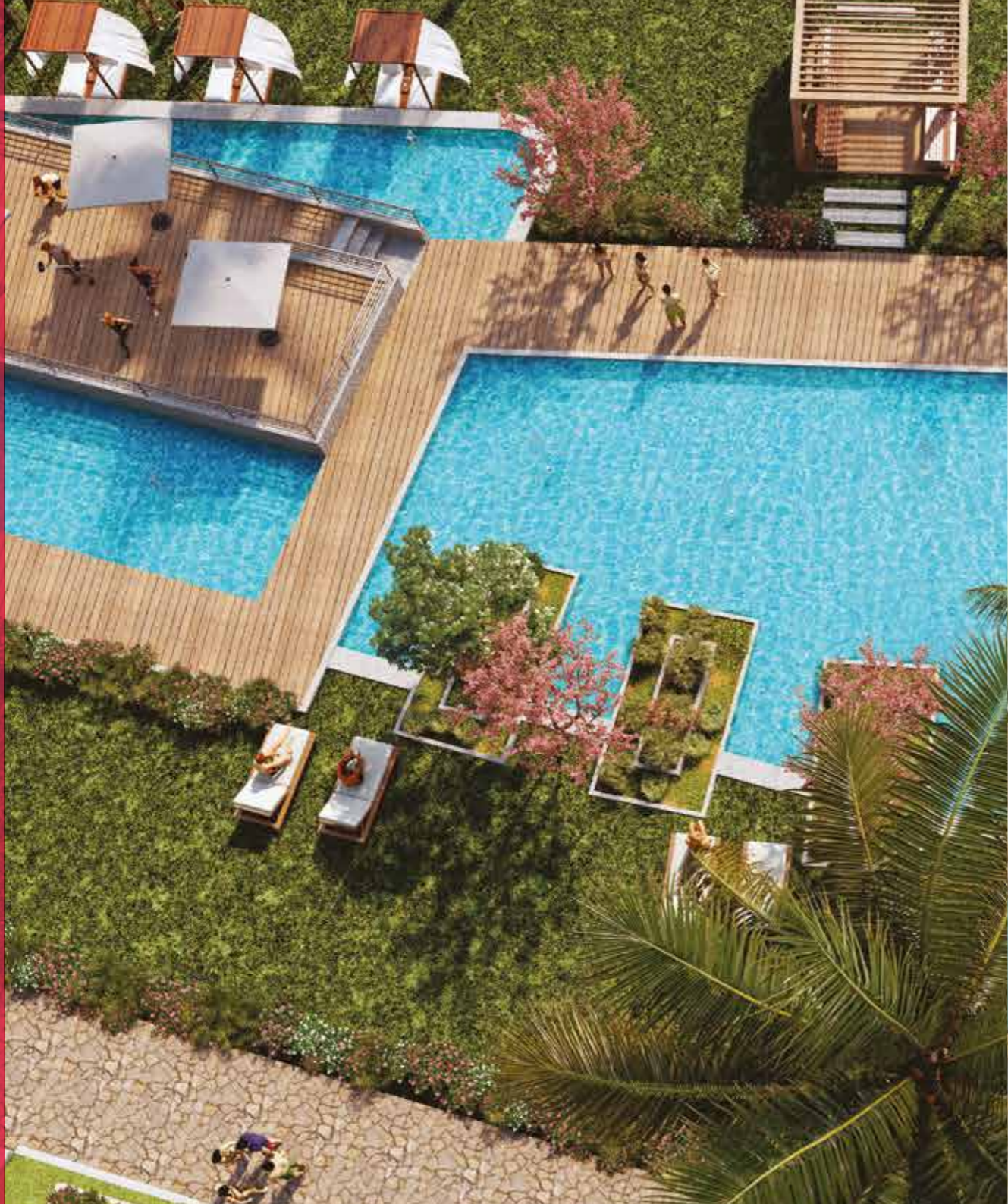
SPA

**DRIVE THRU**



**PRIVATE COMMUNITY**

LAGOON



PRIVATE POOL

# BOARDWALK



# CLUBHOUSE

# CLUBHOUSE

Clubhouse is designed to make each moment memorable.

Whether it's a simple family gather or a special occasion, our fully-serviced clubhouse will meet all of your desires.

## 3000M<sup>2</sup> - 3 FLOORS CONSIST OF



BUSINESS  
CENTRE



GYM & SPA



CAFE &  
RESTAURANT



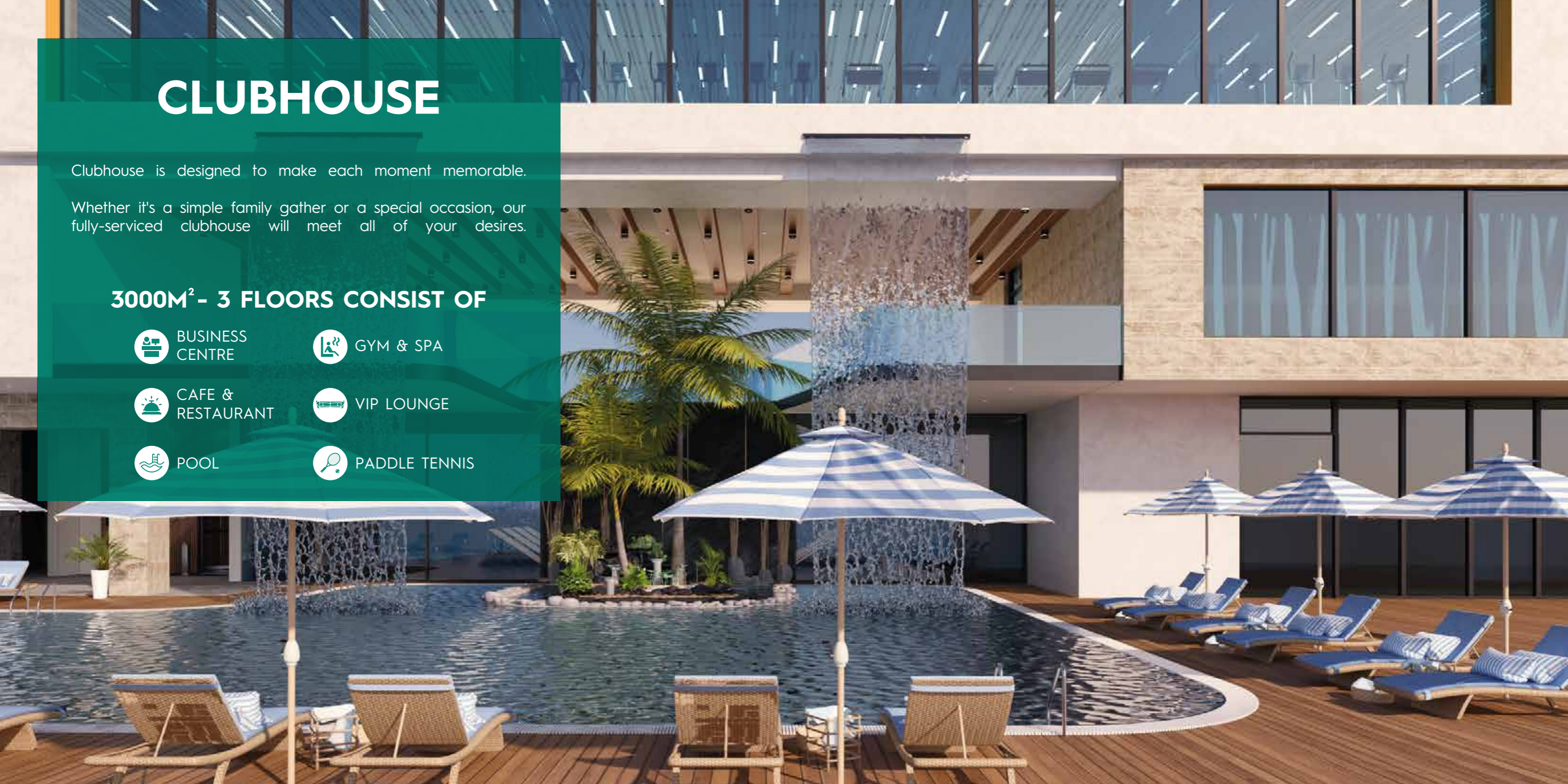
VIP LOUNGE



POOL



PADDLE TENNIS



# LAZULI HOMES



At LAZULI, every home boasts a private pool that offers an outstanding view of the tropical landscape. Apart from this, the property features a range of spacious outdoor areas, including a refreshing garden, inviting gathering spaces, and a breathtaking promenade. Take a leisurely stroll through the heart of this extraordinary space and spend some quality time amidst the serene surroundings.

We strive to provide our clients with their own style of living while maintaining bonds and communication.



**LAZULI LOUNGE**

# LAZULI ROOF

## YOUR EVERYDAY GETAWAY

Being surrounded by nature, calmness, and good vibes automatically eliminates stress and pressure.

Featuring everything you dream of, Lazuli provides a life that is so heart-captivating that it slows down your heartbeat from the fast-paced life and redefines the meaning of life.

The image features a group of five people walking away from the viewer on a beach at sunset. The sun is low on the horizon, creating a warm, golden glow. The people are silhouetted against the bright light. The text 'A PRIVATE RESIDENTIAL COMMUNITY' is overlaid in white, bold, sans-serif font across the middle of the image. The background is a gradient of orange and red, with large, semi-transparent, overlapping circles in shades of orange and grey.

# A PRIVATE RESIDENTIAL COMMUNITY

# UNIT TYPES





**APARTMENT**



**GALAXY COFFEE**

coffee paradise

**CONDOS**



**TOWN HOUSE**

A photograph of a tropical outdoor swimming pool. The pool is rectangular and filled with clear, turquoise water. It is surrounded by a light-colored stone or concrete deck. To the left, there is a wooden dining table and chairs with yellow cushions. The background is filled with dense, lush green tropical plants and trees. The scene is brightly lit, suggesting a sunny day. The text "DEFINE YOUR STYLE" is overlaid in the center of the image in a bold, white, sans-serif font.

**DEFINE YOUR STYLE**

# FLOOR PLANS

# 1 BEDROOM APARTMENT

## A1 52.5 m<sup>2</sup>

Space	Dimensions
Bedroom	3.55 X 3.15 m <sup>2</sup>
Living & Dining room	4.60 X 3.15 m <sup>2</sup>
Kitchen	2.85 X 2.20 m <sup>2</sup>
Bathroom	2.85 X 1.40 m <sup>2</sup>
Outdoor (28 m <sup>2</sup> )	



(Choose your outdoor alteration)

Swimming Pool	Jacuzzi	Pergola	Wooden Deck	Barbeque Area
✓✓	✓✓	✓✓	✓✓	✓✓

### Disclaimers

1. All rooms dimensions are measured to structural elements and exclude wall finished and construction tolerances. 2. All dimensions have been provided by our consultant architects. 3. All materials, dimensions and drawings are approximate, information subject to change without notice. 4. Actual areas may vary from the-stated area, Drawings not to scale. The developer reserves the right to make revisions. 5. Actual unit areas, front windows, porches, terraces, loggia and exterior trim detail may vary by elevation styles and floor level.

# 2 BEDROOMS APARTMENT

## A2 135.5 m<sup>2</sup>

Space	Dimensions
Bedroom 01	3.25 X 3.15 m <sup>2</sup>
Bedroom 02	4.20 X 3.65 m <sup>2</sup>
Living room	6.20 X 3.45 m <sup>2</sup>
Dining room & Kitchen	5.00 X 2.30 m <sup>2</sup>
Jakuzi	3.35 X 1.70 m <sup>2</sup>
Bathroom 01	2.60 X 2.20 m <sup>2</sup>
Bathroom 02	2.90 X 2.20 m <sup>2</sup>
Terrace	3.45 X 1.35 m <sup>2</sup>
Outdoor (53 m <sup>2</sup> )	



(Choose your outdoor alteration)

Swimming Pool	Jacuzzi	Pergola	Wooden Deck	Barbeque Area
✓✓	✓✓	✓✓	✓✓	✓✓

### Disclaimers

1. All rooms dimensions are measured to structural elements and exclude wall finished and construction tolerances. 2. All dimensions have been provided by our consultant architects. 3. All materials, dimensions and drawings are approximate, information subject to change without notice. 4. Actual areas may vary from the-stated area, Drawings not to scale. The developer reserves the right to make revisions. 5. Actual unit areas, front windows, porches, terraces, loggia and exterior trim detail may vary by elevation styles and floor level.

## 2 BEDROOMS APARTMENT

**A3**

105.5 m<sup>2</sup>

Space	Dimensions
Bedroom 01	4.40 X 3.10 m <sup>2</sup>
Bedroom 02	3.90 X 3.15 m <sup>2</sup>
Living room	4.60 X 3.60 m <sup>2</sup>
Dining room & Kitchen	5.00 X 4.00 m <sup>2</sup>
Bathroom	3.20 X 1.75 m <sup>2</sup>
Storage	1.65 X 1.25 m <sup>2</sup>
Terrace	3.40 X 1.60 m <sup>2</sup>
Outdoor (30m <sup>2</sup> )	



(Choose your outdoor alteration)

Swimming Pool	Jacuzzi	Pergola	Wooden Deck	Barbeque Area
✓✓	✓✓	✓✓	✓✓	✓✓

### Disclaimers

1. All rooms dimensions are measured to structural elements and exclude wall finished and construction tolerances. 2. All dimensions have been provided by our consultant architects. 3. All materials, dimensions and drawings are approximate, information subject to change without notice. 4. Actual areas may vary from the-stated area, Drawings not to scale. The developer reserves the right to make revisions. 5. Actual unit areas, front windows, porches, terraces, loggia and exterior trim detail may vary by elevation styles and floor level.

## 1 BEDROOM APARTMENT

**A4**

74.5 m<sup>2</sup>

Space	Dimensions
Bedroom	3.90 X 3.30 m <sup>2</sup>
Living room	4.60 X 3.00 m <sup>2</sup>
Dining room	3.00 X 3.00 m <sup>2</sup>
Kitchen	3.10 X 1.85 m <sup>2</sup>
Bathroom	3.20 X 1.75 m <sup>2</sup>
Storage	1.65 X 1.25 m <sup>2</sup>
Terrace	3.40 X 1.60 m <sup>2</sup>
Outdoor (30m <sup>2</sup> )	



(Choose your outdoor alteration)

Swimming Pool	Jacuzzi	Pergola	Wooden Deck	Barbeque Area
✓✓	✓✓	✓✓	✓✓	✓✓

### Disclaimers

1. All rooms dimensions are measured to structural elements and exclude wall finished and construction tolerances. 2. All dimensions have been provided by our consultant architects. 3. All materials, dimensions and drawings are approximate, information subject to change without notice. 4. Actual areas may vary from the-stated area, Drawings not to scale. The developer reserves the right to make revisions. 5. Actual unit areas, front windows, porches, terraces, loggia and exterior trim detail may vary by elevation styles and floor level.

# 2 BEDROOMS APARTMENT

**A5**  
**101.5 m<sup>2</sup>**  
 203 m<sup>2</sup> total area

Space	Dimensions
Bedroom 01	3.90 X 3.15 m <sup>2</sup>
Bedroom 02	3.30 X 3.15 m <sup>2</sup>
Living room	4.30 X 3.10 m <sup>2</sup>
Dining room & Kitchen	4.00 X 4.90 m <sup>2</sup>
Bathroom	2.80 X 1.75 m <sup>2</sup>
Storage	1.65 X 1.25 m <sup>2</sup>
Terrace	1.80 X 1.60 m <sup>2</sup>
<b>Roof (101.50 m<sup>2</sup>)</b>	



(Choose your outdoor alteration)

Swimming Pool	Jacuzzi	Pergola	Wooden Deck	Barbeque Area
	✓✓	✓✓	✓✓	✓✓

### Disclaimers

1. All rooms dimensions are measured to structural elements and exclude wall finished and construction tolerances. 2. All dimensions have been provided by our consultant architects. 3. All materials, dimensions and drawings are approximate, information subject to change without notice. 4. Actual areas may vary from the-stated area, Drawings not to scale. The developer reserves the right to make revisions. 5. Actual unit areas, front windows, porches, terraces, loggia and exterior trim detail may vary by elevation styles and floor level.

# 1 BEDROOM APARTMENT

**A6**  
**71 m<sup>2</sup>**  
 142 m<sup>2</sup> total area

Space	Dimensions
Bedroom	3.90 X 3.15 m <sup>2</sup>
Living room	4.30 X 3.10 m <sup>2</sup>
Dining room & Kitchen	3.80 X 3.00 m <sup>2</sup>
Bathroom	2.80 X 1.75 m <sup>2</sup>
Terrace	1.80 X 1.60 m <sup>2</sup>
<b>Roof (71 m<sup>2</sup>)</b>	



(Choose your outdoor alteration)

Swimming Pool	Jacuzzi	Pergola	Wooden Deck	Barbeque Area
	✓✓	✓✓	✓✓	✓✓

### Disclaimers

1. All rooms dimensions are measured to structural elements and exclude wall finished and construction tolerances. 2. All dimensions have been provided by our consultant architects. 3. All materials, dimensions and drawings are approximate, information subject to change without notice. 4. Actual areas may vary from the-stated area, Drawings not to scale. The developer reserves the right to make revisions. 5. Actual unit areas, front windows, porches, terraces, loggia and exterior trim detail may vary by elevation styles and floor level.

# STUDIO

## C1

36.5 m<sup>2</sup>

Space	Dimensions
Bedroom	4.20 X 3.30 m <sup>2</sup>
Bathroom	3.45 X 1.40 m <sup>2</sup>
Dining room & Kitchen	2.60 X 1.75 m <sup>2</sup>



# STUDIO

## C2

35.5 m<sup>2</sup>

Space	Dimensions
Bedroom	4.40 X 3.30 m <sup>2</sup>
Bathroom	3.20 X 1.40 m <sup>2</sup>
Kitchen	2.50 X 1.80 m <sup>2</sup>



### Disclaimers

1. All rooms dimensions are measured to structural elements and exclude wall finished and construction tolerances. 2. All dimensions have been provided by our consultant architects. 3. All materials, dimensions and drawings are approximate, information subject to change without notice. 4. Actual areas may vary from the-stated area, Drawings not to scale. The developer reserves the right to make revisions. 5. Actual unit areas, front windows, porches, terraces, loggia and exterior trim detail may vary by elevation styles and floor level.

### Disclaimers

1. All rooms dimensions are measured to structural elements and exclude wall finished and construction tolerances. 2. All dimensions have been provided by our consultant architects. 3. All materials, dimensions and drawings are approximate, information subject to change without notice. 4. Actual areas may vary from the-stated area, Drawings not to scale. The developer reserves the right to make revisions. 5. Actual unit areas, front windows, porches, terraces, loggia and exterior trim detail may vary by elevation styles and floor level.

# 1 BEDROOM CONDOS

## C3

65.5 m<sup>2</sup>

Space	Dimensions
Bedroom	3.60 X 3.20 m <sup>2</sup>
Bathroom	2.40 X 2.30 m <sup>2</sup>
Living, Dining & Kitchen	5.65 X 4.00 m <sup>2</sup>



# 1 BEDROOM CONDOS

## C4

57 m<sup>2</sup>

Space	Dimensions
Bedroom	3.65 X 3.20 m <sup>2</sup>
Bathroom	2.00 X 1.80 m <sup>2</sup>
Living, Dining & Kitchen	5.55 X 3.30 m <sup>2</sup>
Terrace	2.80 X 0.60 m <sup>2</sup>



### Disclaimers

1. All rooms dimensions are measured to structural elements and exclude wall finished and construction tolerances. 2. All dimensions have been provided by our consultant architects. 3. All materials, dimensions and drawings are approximate, information subject to change without notice. 4. Actual areas may vary from the-stated area. Drawings not to scale. The developer reserves the right to make revisions. 5. Actual unit areas, front windows, porches, terraces, loggia and exterior trim detail may vary by elevation styles and floor level.

### Disclaimers

1. All rooms dimensions are measured to structural elements and exclude wall finished and construction tolerances. 2. All dimensions have been provided by our consultant architects. 3. All materials, dimensions and drawings are approximate, information subject to change without notice. 4. Actual areas may vary from the-stated area. Drawings not to scale. The developer reserves the right to make revisions. 5. Actual unit areas, front windows, porches, terraces, loggia and exterior trim detail may vary by elevation styles and floor level.

# 1 BEDROOM CONDOS

## C5

**57 m<sup>2</sup>**  
149.5 m<sup>2</sup> total area

Space	Dimensions
Bedroom	3.65 X 3.20 m <sup>2</sup>
Bathroom	2.00 X 1.80 m <sup>2</sup>
Living, Dining & Kitchen	5.55 X 3.30 m <sup>2</sup>
Terrace	2.80 X 0.60 m <sup>2</sup>
Roof (92.50 m <sup>2</sup> )	



(Choose your outdoor alteration)

Swimming Pool	Jacuzzi	Pergola	Wooden Deck	Barbeque Area
	✓✓	✓✓	✓✓	✓✓

### Disclaimers

1. All rooms dimensions are measured to structural elements and exclude wall finished and construction tolerances. 2. All dimensions have been provided by our consultant architects. 3. All materials, dimensions and drawings are approximate, information subject to change without notice. 4. Actual areas may vary from the-stated area. Drawings not to scale. The developer reserves the right to make revisions. 5. Actual unit areas, front windows, porches, terraces, loggia and exterior trim detail may vary by elevation styles and floor level.

# 1 BEDROOM CONDOS

## C6

**65.5 m<sup>2</sup>**  
170.5 m<sup>2</sup> total area

Space	Dimensions
Bedroom	3.60 X 3.20 m <sup>2</sup>
Bathroom	2.40 X 2.30 m <sup>2</sup>
Living, Dining & Kitchen	5.65 X 4.00 m <sup>2</sup>
Roof (105 m <sup>2</sup> )	



(Choose your outdoor alteration)

Swimming Pool	Jacuzzi	Pergola	Wooden Deck	Barbeque Area
	✓✓	✓✓	✓✓	✓✓

### Disclaimers

1. All rooms dimensions are measured to structural elements and exclude wall finished and construction tolerances. 2. All dimensions have been provided by our consultant architects. 3. All materials, dimensions and drawings are approximate, information subject to change without notice. 4. Actual areas may vary from the-stated area. Drawings not to scale. The developer reserves the right to make revisions. 5. Actual unit areas, front windows, porches, terraces, loggia and exterior trim detail may vary by elevation styles and floor level.

## 2 BEDROOMS CONDOS

**C7**

89 m<sup>2</sup>

Space	Dimensions
Bedroom 01	3.65 X 3.00 m <sup>2</sup>
Bedroom 02	4.30 X 3.65 m <sup>2</sup>
Living, Dining & Kitchen	5.50 X 5.30 m <sup>2</sup>
Bathroom	2.45 X 1.70 m <sup>2</sup>

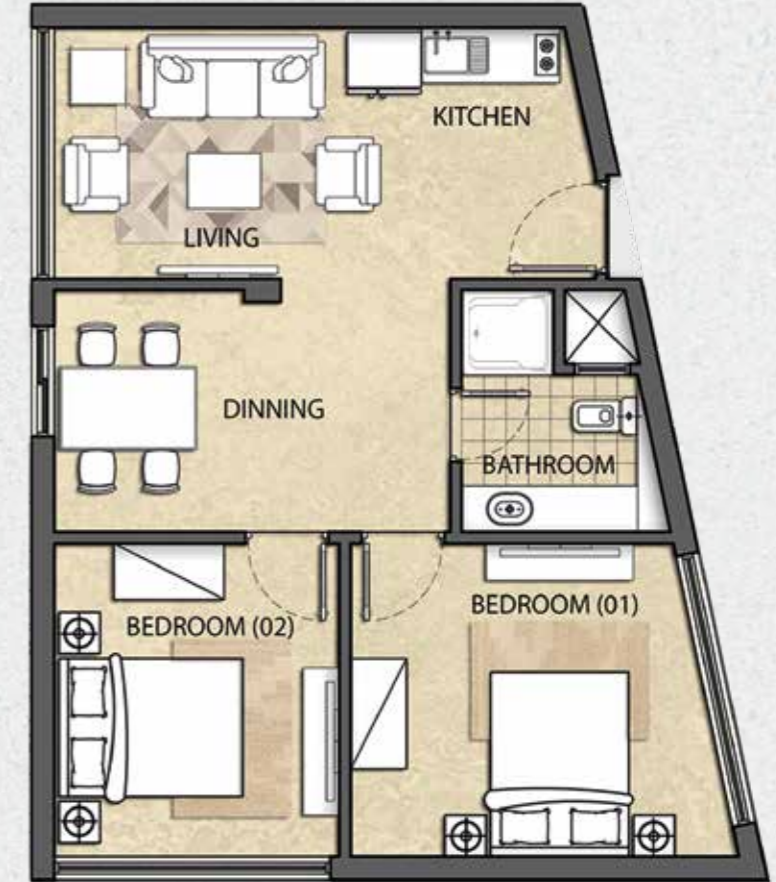


## 2 BEDROOMS CONDOS

**C8**

89 m<sup>2</sup>

Space	Dimensions
Bedroom 01	4.20 X 3.40 m <sup>2</sup>
Bedroom 02	3.40 X 3.10 m <sup>2</sup>
Living Room & kitchen	5.95 X 2.75 m <sup>2</sup>
Dining Room	4.30 X 2.65 m <sup>2</sup>
Bathroom	2.65 X 2.30 m <sup>2</sup>



### Disclaimers

1. All rooms dimensions are measured to structural elements and exclude wall finished and construction tolerances. 2. All dimensions have been provided by our consultant architects. 3. All materials, dimensions and drawings are approximate, information subject to change without notice. 4. Actual areas may vary from the-stated area, Drawings not to scale. The developer reserves the right to make revisions. 5. Actual unit areas, front windows, porches, terraces, loggia and exterior trim detail may vary by elevation styles and floor level.

### Disclaimers

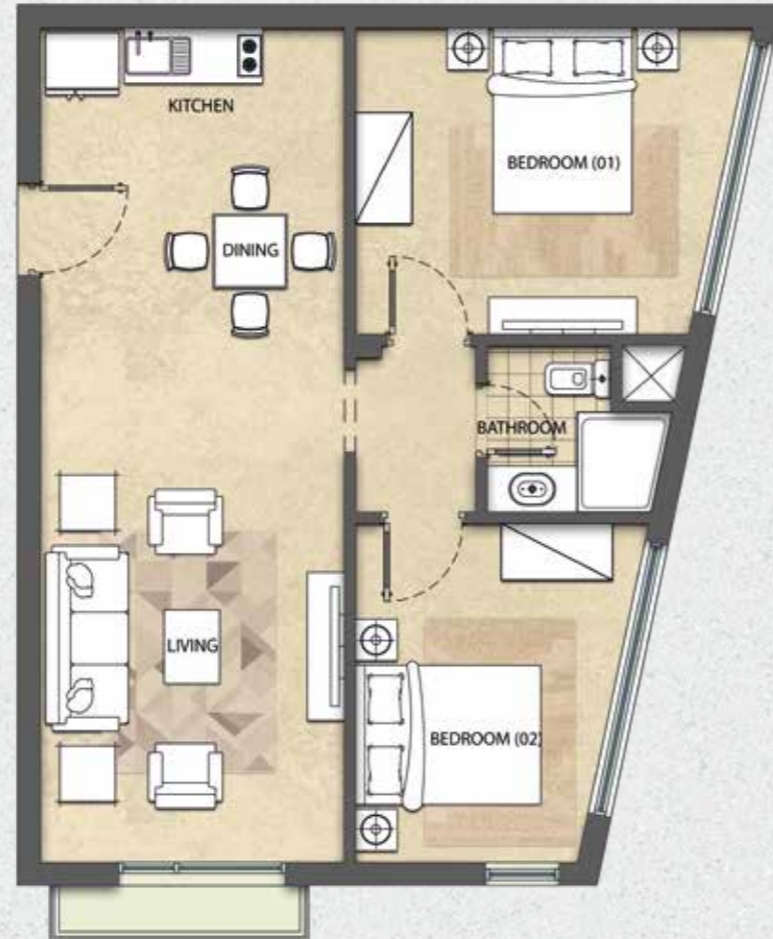
1. All rooms dimensions are measured to structural elements and exclude wall finished and construction tolerances. 2. All dimensions have been provided by our consultant architects. 3. All materials, dimensions and drawings are approximate, information subject to change without notice. 4. Actual areas may vary from the-stated area, Drawings not to scale. The developer reserves the right to make revisions. 5. Actual unit areas, front windows, porches, terraces, loggia and exterior trim detail may vary by elevation styles and floor level.

## 2 BEDROOMS CONDOS

**C9**

**93 m<sup>2</sup>**

Space	Dimensions
Bedroom 01	4.30 X 3.30 m <sup>2</sup>
Bedroom 02	3.65 X 3.20 m <sup>2</sup>
Living, Dining & Kitchen	9.00 X 3.30 m <sup>2</sup>
Bathroom	2.00 X 1.80 m <sup>2</sup>
Terrace	2.80 X 0.60 m <sup>2</sup>



## 2 BEDROOMS CONDOS

**C10**

**105 m<sup>2</sup>**

Space	Dimensions
Bedroom 01	4.20 X 3.30 m <sup>2</sup>
Bedroom 02	3.60 X 3.20 m <sup>2</sup>
Living, Dining and Kitchen	5.65 X 4.00 m <sup>2</sup>
Bathroom 01	3.45 X 1.40 m <sup>2</sup>
Bathroom 02	2.40 X 2.30 m <sup>2</sup>



### Disclaimers

1. All rooms dimensions are measured to structural elements and exclude wall finished and construction tolerances. 2. All dimensions have been provided by our consultant architects. 3. All materials, dimensions and drawings are approximate, information subject to change without notice. 4. Actual areas may vary from the-stated area, Drawings not to scale. The developer reserves the right to make revisions. 5. Actual unit areas, front windows, porches, terraces, loggia and exterior trim detail may vary by elevation styles and floor level.

### Disclaimers

1. All rooms dimensions are measured to structural elements and exclude wall finished and construction tolerances. 2. All dimensions have been provided by our consultant architects. 3. All materials, dimensions and drawings are approximate, information subject to change without notice. 4. Actual areas may vary from the-stated area, Drawings not to scale. The developer reserves the right to make revisions. 5. Actual unit areas, front windows, porches, terraces, loggia and exterior trim detail may vary by elevation styles and floor level.

## 2 BEDROOMS CONDOS

**C11**

**89 m<sup>2</sup>**  
178 m<sup>2</sup> total area

Space	Dimensions
Bedroom 01	3.65 X 3.00 m <sup>2</sup>
Bedroom 02	4.30 X 3.65 m <sup>2</sup>
Living, Dining & Kitchen	5.50 X 5.30 m <sup>2</sup>
Bathroom	2.45 X 1.70 m <sup>2</sup>
Roof (89 m <sup>2</sup> )	



(Choose your outdoor alteration)

Swimming Pool	Jacuzzi	Pergola	Wooden Deck	Barbeque Area
	✓✓	✓✓	✓✓	✓✓



**Disclaimers**

1. All rooms dimensions are measured to structural elements and exclude wall finished and construction tolerances. 2. All dimensions have been provided by our consultant architects. 3. All materials, dimensions and drawings are approximate, information subject to change without notice. 4. Actual areas may vary from the-stated area, Drawings not to scale. The developer reserves the right to make revisions. 5. Actual unit areas, front windows, porches, terraces, loggia and exterior trim detail may vary by elevation styles and floor level.

## 2 BEDROOMS CONDOS

**C12**

**89 m<sup>2</sup>**  
178 m<sup>2</sup> total area

Space	Dimensions
Bedroom 01	4.20 X 3.40 m <sup>2</sup>
Bedroom 02	3.40 X 3.10 m <sup>2</sup>
Living Room	4.30 X 2.75 m <sup>2</sup>
Dining Room	4.30 X 2.65 m <sup>2</sup>
Kitchen	2.75 X 1.60 m <sup>2</sup>
Bathroom	2.65 X 2.30 m <sup>2</sup>
Roof (89 m <sup>2</sup> )	



(Choose your outdoor alteration)

Swimming Pool	Jacuzzi	Pergola	Wooden Deck	Barbeque Area
	✓✓	✓✓	✓✓	✓✓



**Disclaimers**

1. All rooms dimensions are measured to structural elements and exclude wall finished and construction tolerances. 2. All dimensions have been provided by our consultant architects. 3. All materials, dimensions and drawings are approximate, information subject to change without notice. 4. Actual areas may vary from the-stated area, Drawings not to scale. The developer reserves the right to make revisions. 5. Actual unit areas, front windows, porches, terraces, loggia and exterior trim detail may vary by elevation styles and floor level.

## 2 BEDROOMS CONDOS

### C13

**92.5 m<sup>2</sup>**  
185 m<sup>2</sup> total area

Space	Dimensions
Bedroom 01	4.30 X 3.30 m <sup>2</sup>
Bedroom 02	3.65 X 3.20 m <sup>2</sup>
Living, Dining & Kitchen	9.00 X 3.30 m <sup>2</sup>
Bathroom	2.00 X 1.80 m <sup>2</sup>
Terrace	2.80 X 0.60 m <sup>2</sup>
Roof (92.50 m <sup>2</sup> )	



(Choose your outdoor alteration)

Swimming Pool	Jacuzzi	Pergola	Wooden Deck	Barbeque Area
	✓✓	✓✓	✓✓	✓✓

#### Disclaimers

1. All rooms dimensions are measured to structural elements and exclude wall finished and construction tolerances. 2. All dimensions have been provided by our consultant architects. 3. All materials, dimensions and drawings are approximate, information subject to change without notice. 4. Actual areas may vary from the-stated area, Drawings not to scale. The developer reserves the right to make revisions. 5. Actual unit areas, front windows, porches, terraces, loggia and exterior trim detail may vary by elevation styles and floor level.

## 2 BEDROOMS CONDOS

### C14

**105 m<sup>2</sup>**  
210 m<sup>2</sup> total area

Space	Dimensions
Bedroom 01	4.20 X 3.30 m <sup>2</sup>
Bedroom 02	3.60 X 3.20 m <sup>2</sup>
Living, Dining & Kitchen	5.65 X 4.00 m <sup>2</sup>
Bathroom 01	3.45 X 1.40 m <sup>2</sup>
Bathroom 02	2.40 X 2.30 m <sup>2</sup>
Roof (105 m <sup>2</sup> )	



(Choose your outdoor alteration)

Swimming Pool	Jacuzzi	Pergola	Wooden Deck	Barbeque Area
	✓✓	✓✓	✓✓	✓✓

#### Disclaimers

1. All rooms dimensions are measured to structural elements and exclude wall finished and construction tolerances. 2. All dimensions have been provided by our consultant architects. 3. All materials, dimensions and drawings are approximate, information subject to change without notice. 4. Actual areas may vary from the-stated area, Drawings not to scale. The developer reserves the right to make revisions. 5. Actual unit areas, front windows, porches, terraces, loggia and exterior trim detail may vary by elevation styles and floor level.



**MAGNIFICENT VIEW  
FOR EVERY ONE**

# ABOUT REKAZ

SIMPLE, YET SIGNIFICANT

Being established in **2016**, **REKAZ Developments** is a dynamic real estate development company, based to offer sustainable real estate projects with a unique harmony between premium quality, exceptional customer service, and innovative yet environment-friendly buildings that enable their clients to enjoy the experience of living and working in an elegant, smart, secured, and comfortable atmosphere.

**REKAZ** is a forward integration from **DARA** Company, which was originally established in **2003** as an architectural consultancy firm specialising in architecture, master planning, interior design, and project management. **DARA** insists on consistently delivering outstanding residential, commercial, retail, educational, and corporate spaces for our diverse clients. Honoured by four awards for unique architecture and innovative designs in local and regional projects.

Rekaz has an innovative and unique approach to the delivery process of its projects. It strives for and functions individually in its core specialties and adds great value when working in collaboration on any given project. As a result, a new landmark comes to life, starting from land acquisition, concept, and design, all the way to contracting and selling.

This business model is built on integration and clear, open communication channels, which have helped prove our rapid growth in the region.

## REKAZ ACHIEVEMENTS



BEST ARCHITECTS DESIGN   BEST ARCHITECTS DESIGN   BEST ARCHITECTS DESIGN   BIG FIVE DUBAI

## OUR SUCCESS PARTNERS



## DEVELOPED BY



**REKAZ**  
DEVELOPMENTS

📍 HURGHADA BRANCH : 11/12 touristic promenade,road  
National Resort infront of Bank Misr & Egyptair  
📍 CAIRO BRANCH : 90th St., Concord Plaza,G3 ,2nd Floor  
🌐 [www.rekazltd.com](http://www.rekazltd.com)

**HOTLINE**  
**16506**